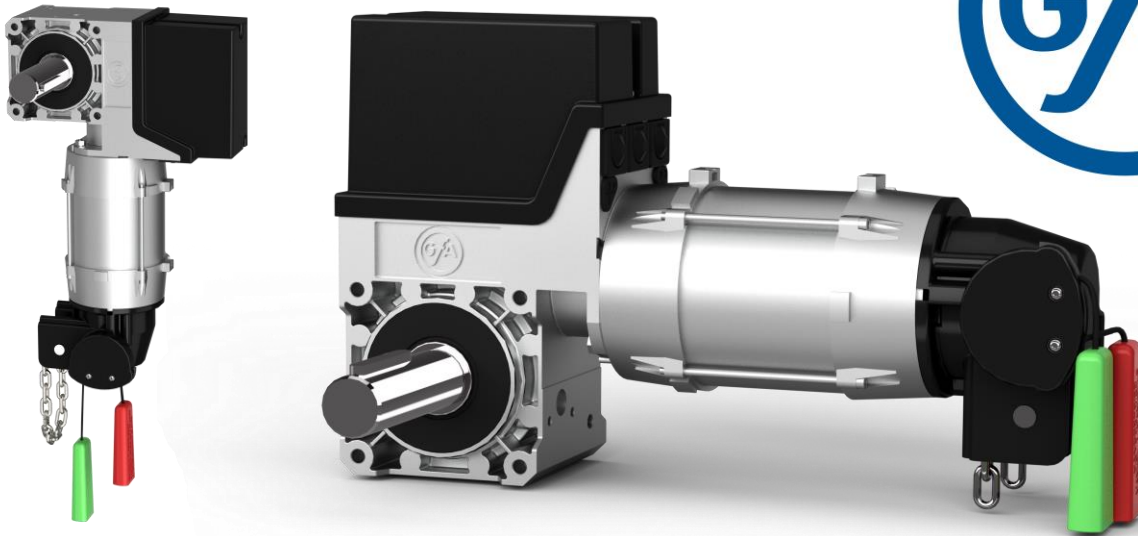


## Simplicity that Delivers - GfA Chain Drives for Balanced Doors



### GfA Chain Drives – for Australian balanced Roller Shutter

- **Safety Features**
  - Protection against drive overload
  - Strong Gearbox Design offers High Holding Torque and protect against gearbox failure
  - Additional Safety Limits protect against door overrun
- **Operator Benefits:**
  - **Available with digital or mechanical limits for the same price**
  - Digital Limits allow adjustment of the door position from the ground
  - All 3-phase operators are **high cycle rated**
  - **High efficiency gearbox results in low power consumption**
  - All standard operators are protected against dust and **jets of water from all directions (IP65)**
  - Light compact operator, easy to install and handle
  - Operator mounting **hole pattern suits standard Australian mounting plates**
  - All 3 Phase operators can be **wired with or without neutral supply**
  - **Plug & Play** options are available for single and 3-phase operators
  - Due to the unique removable shaft, all operators are **suitable for left and right hand installation, reducing your stock levels will save cost**
  - All available kits include operator with hauling chain, controller and pluggable connection cable
  - **Short lead times** from our central GfA - warehouse in Sydney, where we permanently hold more than 1500 operators on stock.
- **Support**
  - **National Service Support** from our GfA-Staff in Sydney, by our experienced engineering team

**Chain Drive Operators are backed by a 2 year / 500 operation hours warranty!**

# Simplicity that Delivers - GfA Chain Drives for Balanced Doors

## Selection Table:

### Chain Drive Operators – 240 V

Max. Door Area (Balanced)	Push Button Control (Kit Part No)	Logic+ Control <sup>1)</sup> (Kit Part No)	Logic Control with Variable Speed Drive (Kit Part No)
22 m <sup>2</sup> (0.5 HP-EQ)	KE 5.24-WS - TS959 (AU21032)	KE 5.24-WS - TS971+ (AU21031)	KE 6.80 - TS971+ (AU21055)
40 m <sup>2</sup> (1.0 HP-EQ)	KE 9.24-WS - TS959 (AU21051)	KE 9.24-WS - TS971+ (AU21045)	KE 14.80-FI - TS971+ (AU21058)
60 m <sup>2</sup> (2.0 HP-EQ)	-	-	KE 17.60-FI - TS971+ (AU21059)

### Chain Drive Operators – 3 x 415 V

Door Area (Balanced)	Push Button Control (Kit Part No)	Logic+ Control <sup>1)</sup> (Kit Part No)	Logic Control with Variable Speed Drive (Kit Part No)
40 m <sup>2</sup> (1.0 HP-EQ)	KE 9.24 - TS959 (AU21053)	KE 9.24 - TS971+ (AU21042)	KE 14.80-FI - TS971+ (AU21058)
60 m <sup>2</sup> (2.0 HP-EQ)	KE 17.24 - TS959 (AU21049)	KE 17.24 - TS971+ (AU21044)	KE 17.60-FI - TS971+ (AU21059)

1) TS 971+ Controller includes: built-in receiver, 2 transmitters, 1x reflector PE-beam.

## Accessories:

GfA can offer a wide range of mechanical and electrical accessories, please contact our office for further details.